



Detailed vehicle evidence.

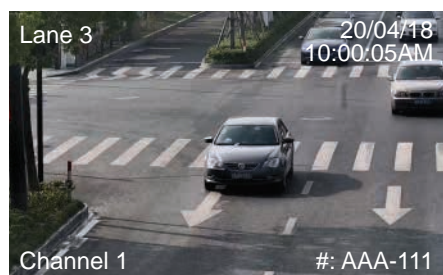
Ultimate Series: Motorised 2.0MP lens bullets with number plate enhancement

Specially designed for number plate enhancement, Ultimate Series Number Plate Bullets are designed to obtain video evidence with vehicle identification in all environments, including in scenes with challenging lighting conditions.

- Stream Full HD 1080p (1920 x 1080) at 25fps
- 2.7~12mm motorised lens (101 ~ 36°, DC lens)
- Edge enhancement for number plate detail & legibility
- Highlight compensation to mask headlight glare
- Supports shutter speed windowing; set min/max speed
- Motorised infrared cut filter for true day/night
- MicroSD slot for recording at the edge up to 128GB
- IP67/IK10 weather & vandal resistant metal housing
- Automatic number-plate recognition (ANPR) with configurable OSD incl. number plate (*TN model only*)



Number Plate Enhance & Recognition



Detailed OSD Configuration



Superb Low Light Performance

Model	VSIP2MPFBIRMTV2	VSIP2MPFBIRMTN	
Camera	Image Sensor	1/2.8" 2.0MP Progressive Scan CMOS	
	Effective Pixels	1920 (H) x 1080 (V)	
	RAM / ROM	1024MB / 128MB	
	Min Illumination	0.005 Lux/F1.6 (Color), 0 Lux/F1.53 (IR on)	
	S/N Ratio	> 50dB	
	Infrared System	4 x Infrared LED, 10m range, Auto/manual on/off control	
Lens	Lens / Iris	2.7 ~ 12mm F1.6 Motorised Varifocal Lens with Auto Iris	
	Field of View	Horizontal: 101°~36°, Vertical: 53°~20° (4x Optical Zoom)	
	Focus	Auto Focus / 3m Min. Focus Distance	
Video	Resolution	1080p (1920 x 1080) to CIF (352 x 288)	
	Frame Rate	Main	1080p (1 ~ 25fps)
		Sub	D1 (1 ~ 25fps)
		Third	N/A
	Video Compression	H.265 / H.264	
	Bit Rate	32 ~ 16384Kbps	
	Bit Rate Control	Constant bit rate (CBR) / Variable bit rate (VBR)	
	Day/Night	Auto (ICR) / Color / B&W	
	Lighting Compensation	BLC / HLC / WDR (140dB)	
	White Balance	Auto / Manual	
Gain Control	Auto / Manual		
Noise Reduction	3D DNR		
Picture Control	Mirror / Flip (0°, 90°, 180°, 270°)		
IVS	Intelligent Functions	Number Plate Edge Enhancement	Number Plate Edge Enhancement, Number Plate Recognition, Loop/Video Detection, Snapshot, OSD (Time, Location, Number Plate, Lane No.), White List (up to 1000), Barrier Control (1ch Relay Out)
Network	Ethernet	RJ-45 (10/100 Base-T)	
	Protocol	IPv4v6; HTTP; TCP/IP; UDP; NTP; DHCP; DNS	
	Streaming Method	Unicast / Multicast	
	Max. User Access	10 Users / 20 Users	
Interface	Video Interface	N/A	
	Audio Interface	1 Input / 1 Output	
	Alarm Interface	2 Input / 1 Output	
	RS485	N/A	
	Edge Storage	MicroSD Card Slot (up to 128GB) / NAS / Local PC	
	Interoperability	ONVIF / SDK / CGI	
Environmental	Power Supply	12VDC / PoE+ (802.3af) (Class 4)	
	Power Consumption	<12W	
	Operating Conditions	-40° ~ +60° C / Less than 95% RH	
	Ingress Protection	IP67	
	Vandal Resistance	IK10	
	Housing	Metal	
	Pan/Tilt/Rotation	Pan: 0° ~ 360°; Tilt: 0° ~ 90°; Rotation: 0° ~ 360°	
	Dimensions	Ø273mm x 95mm x 96mm	
Net Weight	1.12kg		
Application	Diagrams		
	Accessories		
Models	Junction Box (VSBKTA121)	Pole Mount (VSBKTA121 + VSBKTA152E)	Corner Mount (VSBKTA121 + VSBKTA151)